

# Alaska Department of Fish and Game

Habitat Section  
Southeast Region



## 114-34-10100-2032 Tributary 2

## ADDITION

**Water body name:**

**Survey date:** 9/12/2022

**Quad:** Juneau A-5

**Species & Lifestage:**

**Upper Reach Latitude:** 58.133903 **Longitude:** -135.648671

**Survey crew:** FC, RR

**Lower Reach Latitude:** 58.134616 **Longitude:** -135.646567

**Findings:** We surveyed this uncataloged stream using a backpack electrofisher and GPS. We captured juvenile coho salmon, Dolly Varden, and cutthroat trout. The tributary stream flows through a gravel-dominated channel, passing an old road crossing with a removed structure and joining a tributary heavily impacted by beaver activity (Table 1; Figures 1, 2).

**Recommendations:** Add this uncataloged stream to the anadromous waters catalog for rearing coho salmon (Figure 3).

**Nomination:** Pending

Table 1.—114-34-10100-2032 tributary 2 survey data.

Waypoint	Latitude	Longitude	Notes	Stream Width ft	Stream Substrate	Habitat Features	Gradient %	Sample Effort	Sample Results
1751	58.133215	-135.651229	Start of survey on tributary at spur road crossing. No crossing structure. Resident fish capture only; advancing downstream.	4-6	Small Gravel Large Gravel	Cut Banks	2-4	EF	2 DV
1752	58.133224	-135.650787	Continued resident fish capture.					EF	3 CT
1753	58.133206	-135.650512	Stream braiding and becoming somewhat disconnected on certain braids. Overgrown with skunk cabbage.					EF	No Fish
1754	58.133906	-135.648691	Shocked pools often from last upstream waypoint. No obvious barrier but some reaches difficult to walk in/near stream. Young-of-year and 2-yr CO capture.	4-6	Small Gravel Large Gravel	Cut Banks Log Jams	2-4	EF	2 CO 3 CT 1 DV



Figure 1.—Juvenile coho salmon captured at waypoint 1754.



Figure 2.—Channel at waypoint 1754.



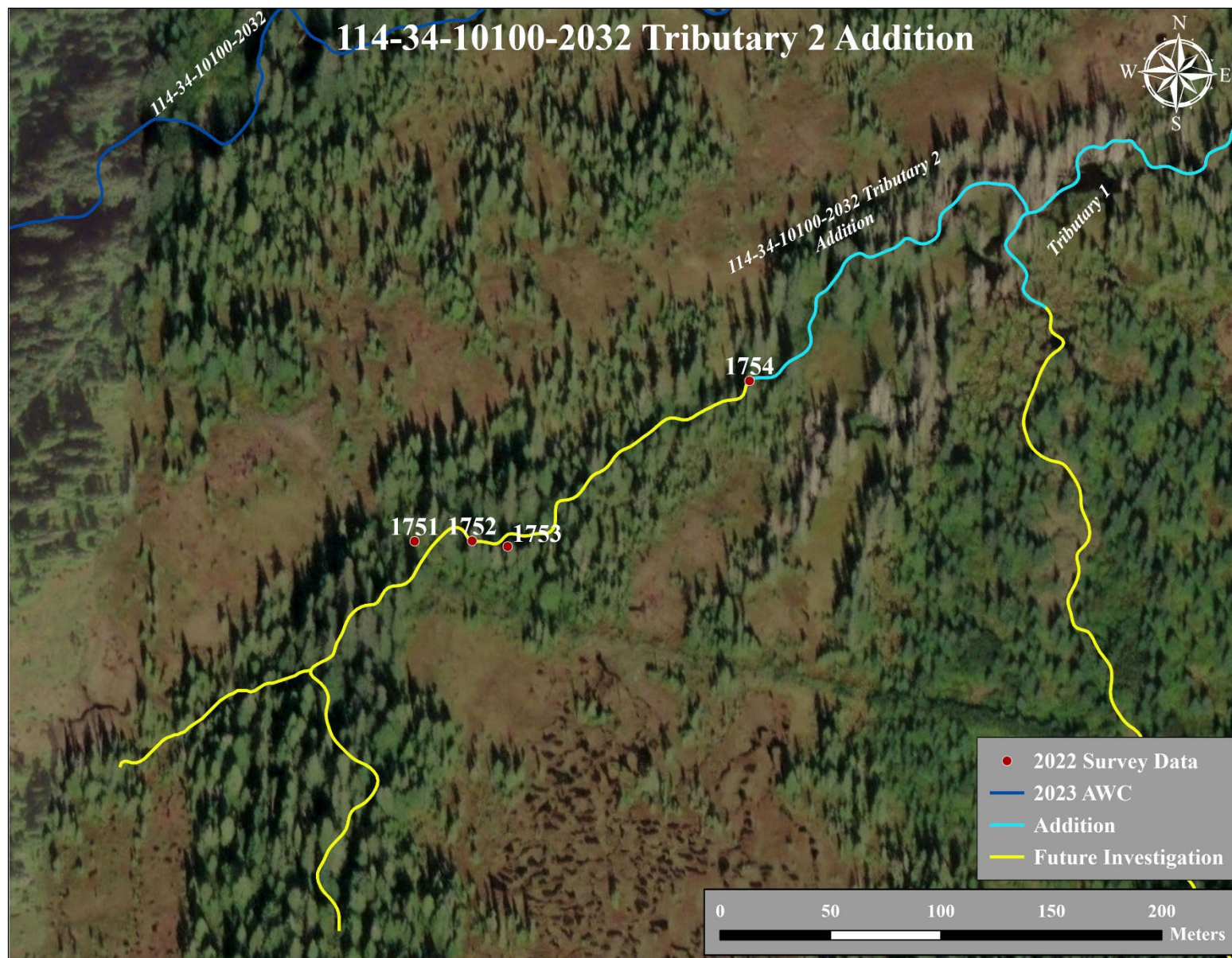


Figure 3.–114-34-10100-2032 tributary 2 addition map.